

CIVIC PRECINCT NEWCASTLE

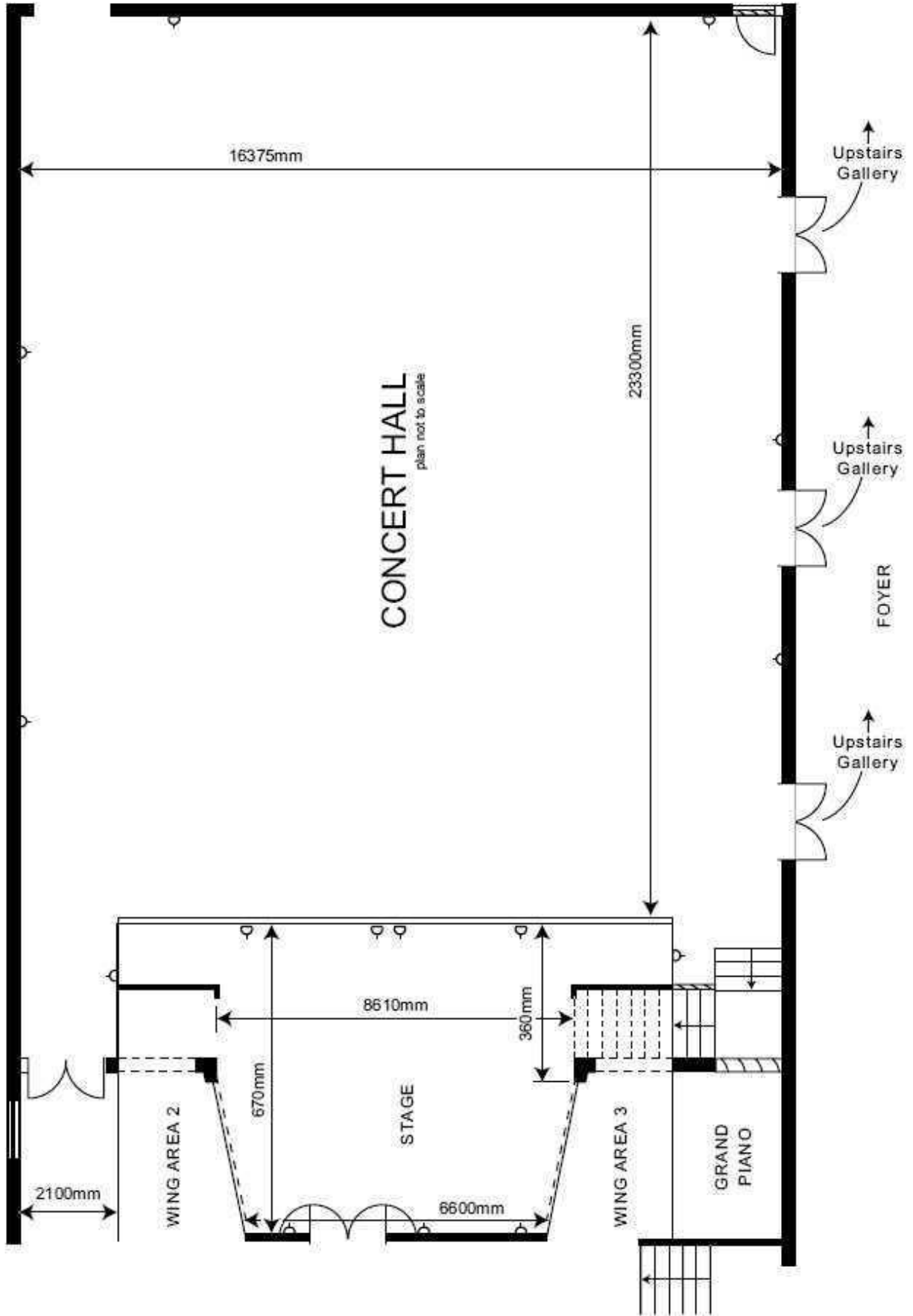
CIVIC THEATRE - CITY HALL - PLAYHOUSE - WHEELER PLACE - FORT SCRATCHLEY

375 HUNTER STREET NEWCASTLE NSW 2300 AUSTRALIA
PHONE 02 4974 2166 civicprecinctnewcastle@ncc.nsw.gov.au FAX 02 4974 2172

TECHNICAL SERVICES INVENTORY CITY HALL - MAIN CONCERT HALL

<i>Contents</i>	<i>Page</i>
Concert Hall Stage & Stalls Plan	2-3
Seating Capacity / Stage Dimensions / Power / Dimmers	4
Lighting Control Desk / Equipment	5
Lighting Plan	6-7
Sound / Stage Manager Consol	8
Dressing Rooms / Other Equipment	8
Loading Facilities – Stage Level	9
Loading Facilities – Stage Loading Door	10-11

CONCERT HALL STAGE & STALLS PLAN





SEATING CAPACITY

Full Lyric Mode	Capacity: 809	Reduced Lyric Mode	Capacity: 480
Concert Hall Capacity	809	Theatre Capacity	809
Less	0	Less: Gallery	329
Total	809	Total	480

Orchestral Mode / Stage Extensions	Capacity: 761	Reduced Lyric Mode w/- Stage Extensions	Capacity: 432
Theatre Capacity	809	Theatre Capacity	809
Less: Stalls Rows A - B	48	Less: talls Rows A - B	48
Total	761	Less: Gallery	329
		Total	432

STAGE DIMENSIONS

Stage Area

Maximum Width DS	8510mm
Maximum Width US	6600mm
Maximum Depth	6700mm
Height above Stalls Floor	1400mm

Thrust Stage Area

Maximum Width	11950mm
Maximum Depth	2970mm
Height above Stalls Floor	1400mm

Stage Surface
 Flat / Sprung Floor on Timber Rafters
 Finish is Polished Hardwood

Stage to rear auditorium

Front edge of stage	23155mm
Back of stage	29800mm

Width of Auditorium

Front edge of stage	16020mm
---------------------	---------

Side Wing Area 2

Maximum Width	1700mm
Maximum Length	3700mm
Minimum Width	1200mm

Side Wing Area 3

Maximum Width	1700mm
Maximum Length	3700mm
Minimum Width	1200mm

Back Wall
 Solid Polished Wood Panels
 Access to Wing Areas

Rigging
 There are no Rigging Points above the Stage

OTHER MEASUREMENTS

Front of Stage to Rear Stalls	22700mm
Front edge of Gallery to Rear Stalls	7400mm
On Stage edge of Gallery to Side Walls	2750mm

POWER / DIMMERS

Power Supply

Main Power 100amps

This supplies Stage Dimmers / House Lights / GPOs

Road Power Hook Up

32 amp 3 phase located onstage in Wing 2

LIGHTING CONTROL DESK / EQUIPMENT

Light Control Desk	ETC Nomad Puck 1024 Channel with 40 fader wing
Dimmers	1 x Solution 12 2.4kw dimmer
Patch Outlets	Front of House 24 total, 6 per side booms Front Of House Bar, 10 On Stage 8 at rear wall
Lamp Stock	6 x 1 Kw Pacific 12/28 profile 20 x ETC Source 4 19°Lustre 2 LED profile 16 x ETC D60 Lustre+

NB: All lamps complete with bar clamp, Source-4's have shutter units and gobo holders

SOUND

Equipment List	1 x Yamaha MG16/4 mixer. 10 mic + 2 stereo channels. 2 x Sennheiser EW100 Radio Mics (handheld or lapel) 3 x Shure SM57 microphones
----------------	---

Additional audio equipment is available. Please confirm availability with Technical Services.

P.A. System	Meyer M1D Line array 12 x M1D Curvilinear Array Speaker 2 x M1D-Sub Subwoofer 2 x UPJ front fill stalls 3 x UPM under balcony fill 2 x UPM front fill dress circle
-------------	---

Talkback System	NONE
-----------------	------

There is also an XLR tieline between SM and Bio Box

STAGE MANAGER CONSOLE

Stage Manager Position located Prompt Wing #2
House Light Control
Sound Desk Control

DRESSING ROOMS

Dressing Room 1 Seats approx 6 people
Mirrors / Counter / Sink
Dressing Room Paging
Toilets near by

Dressing Room 2 Seats approx 6 people
Mirrors / Counter / Sink
Dressing Room Paging
Toilets near by

OTHER EQUIPMENT

Pianos 9ft Grand (D) Steinway tuned to A440
Tuning costs extra

Risers (*Subject to Availability*)
15 x Megadeck
Available in 3 heights 185mm,455mm, 605mm. Max 5 units at each height

LOADING FACILITIES

Stage Loading Door

Located on King Street

Stage is located one (1) floor up from street level

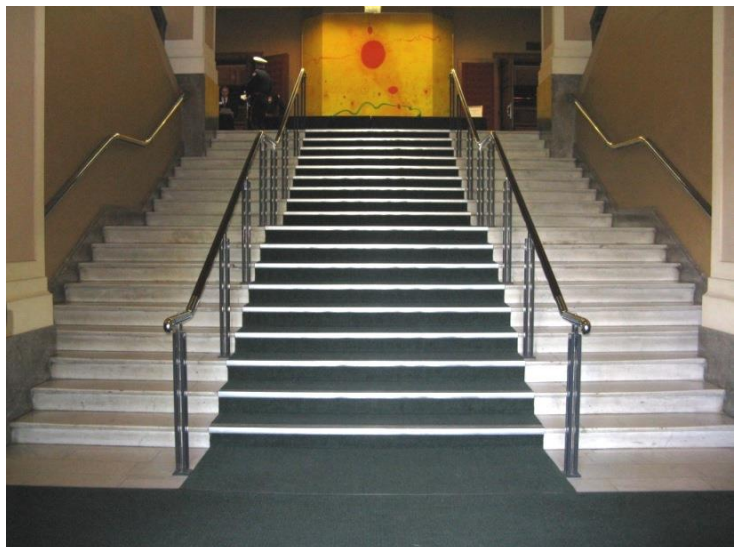
Small trucks only

Maximum Access Height

2470mm

Maximum Access Width

1440mm



Stage Loading Door

Located on Christie Lane

Stage is located two (2) floors up from street level

Maximum Access Height in stairwell 2050mm

Maximum Access Width in stairwell 1600mm

